



The Multi-County eConsult Initiative has reached a landmark in the number of eConsults since 2018, with more than 10,000 eConsults submitted to date!



### **ARMC Welcomes 6 New Specialties**

Gynecology, Obstetrics, Fetal/Maternal Medicine, Urological Gynecology, Genetics: Prenatal Diagnostic Center, and Gastroenterology

### **eConsult News**

ARMC is going strong with a network of **5 FQHC** sites serving the San Bernardino County region.

A total of **107 Primary Care Physicians and Residents** are trained and using eConsult.

We have **48 Specialist Reviewers** providing eConsult clinical dialogue review.

There are **28 Specialties** available for clinical review.

ARMC has submitted a total **3,785 submitted eConsults to date.**

**Total MCEI eConsults Submitted through June 2019!**

**12,448**

# eConsult

Access to information. Access to care.

**June 2019**

### **NEW THIS MONTH**

#### **eConsult Replaces IEHP eReferral Form**

While we have been further developing the eConsult platform, Primary Care Providers were able to use both the IEHP eReferral form and eConsult to submit for referral authorization. We are happy to announce that eConsult will now be fully replacing the IEHP eReferral form on the Provider Portal for any live Specialties and services.

#### **Referral Workgroup July 10th at 4 pm:**

**Meeting ID: <https://zoom.us/j/465692334>**

#### **Primary Care Workgroup July 12th at 12 pm:**

**Meeting ID: <https://zoom.us/j/115396383>**

We encourage you to join this month's workgroup meeting where we discuss important information about the changes in the eConsult workflow including the replacement of the IEHP eReferral form. The IEHP eReferral form will be replaced by eConsult. How will this impact your clinic? Join your workgroup to learn more!

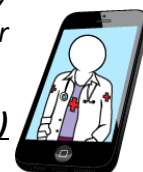
#### **Colonoscopies Will No Longer Require a Dialogue!**

How you ask? We have engineered eConsult to accept screening colonoscopies for internal and external direct to auth + schedule for continuity of care.

#### **Need Support?**

Submit a general support ticket by using the **"Support"** link located at the top of any eConsult window. Don't know your username? Email us at

**[eConsultie@iehp.org](mailto:eConsultie@iehp.org) or call us at (909) 687-0244**



For questions about eConsult use and functionality, or if you are interested in being a part of the initiative call the **MCEI Help Desk (909) 687-0244** or email **[eConsultie@iehp.org](mailto:eConsultie@iehp.org)**



Inland Empire Health Plan