

July 2020

Review your contribution to the Multi-County eConsult Initiative (MCEI) over the past month, and discover what's in store for July.

The MCEI Team is at Your Service Always!



MCEI Workflow Engineers, Physician Leads, and Staff are dedicated to supporting IEHP primary care Physicians and Staff in coordinating patient care via eConsult.

COVID-19 in the Inland Empire

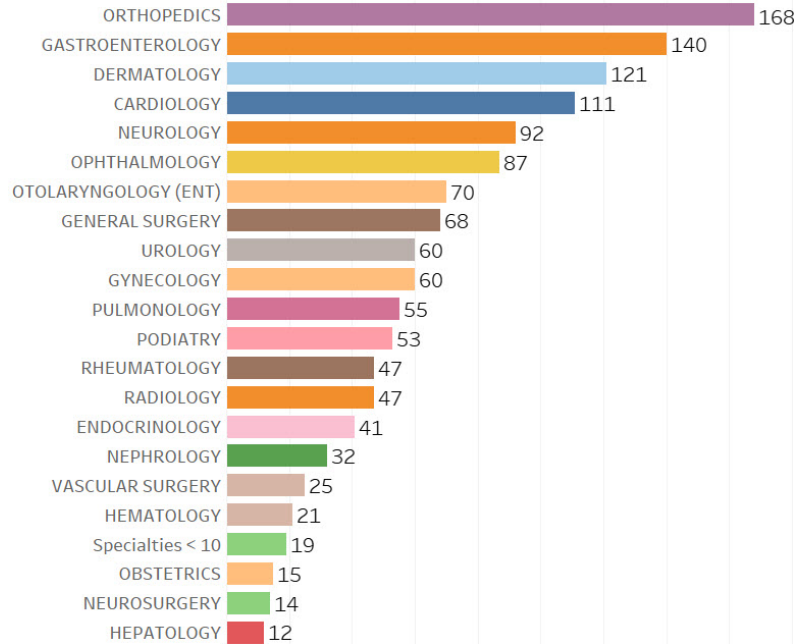
<p>IE hospitals seeing ...</p> <p>30 JUNE 2020</p> <p>front page</p> <p>Intensive care unit capacity could soon become a big</p> <p>READ MORE</p>	<p>'We're surging agai...</p> <p>30 JUNE 2020</p> <p>front page</p> <p>For a brief moment, California returned to bars, beaches and</p> <p>READ MORE</p>
---	--

Stay up-to-date about coronavirus-related developments in the Inland Empire at CovidIE.com

(Developed by [WISE Healthcare](#) for the Inland Empire; not an IEHP-sponsored product)

Nearly 60,000 eConsults!

IEHP eConsults Processed This Month



Combined, IEHP, Arrowhead Regional Medical Center (ARMC), and Riverside University Health System (RUHS) have processed **59,592 eConsults**.

IEHP community clinics play a major role, having submitted **1,602 eConsults** this month alone, and **22,523 eConsults** since MCEI's genesis.

Meet Your Specialist Reviewer

Dr. Khaled Selim, Hepatology

Meet Dr. Khaled Selim, MD. He is a Board Certified specialist in transplant hepatology and gastroenterology. Dr. Selim has performed procedures in gastrointestinal endoscopies, paracentesis, and preventative medicine. He is an expert in conditions like autoimmune hepatitis and chronic liver disease.



He graduated from the Cairo University School of Medicine and completed an internship at Cairo University Hospital. He also completed an internship and residency at St. Joseph's Regional Medical Center.

Dr. Selim has been practicing for over 20 years. He is fluent in English and Arabic. He reviews Hepatology eConsults from IEHP contracted primary care physicians.

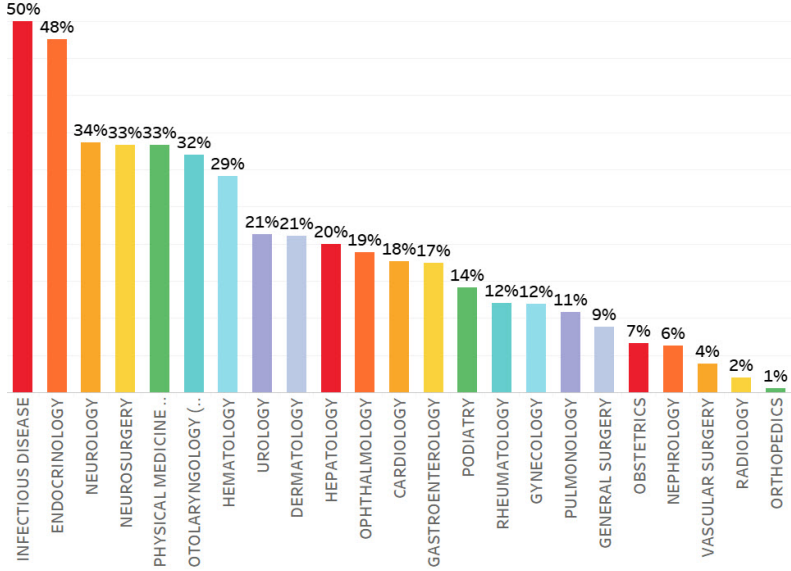
Your Month in Review

Bettering Patient Care

Percent of eConsults for which IEHP patients obtained asynchronous care in June

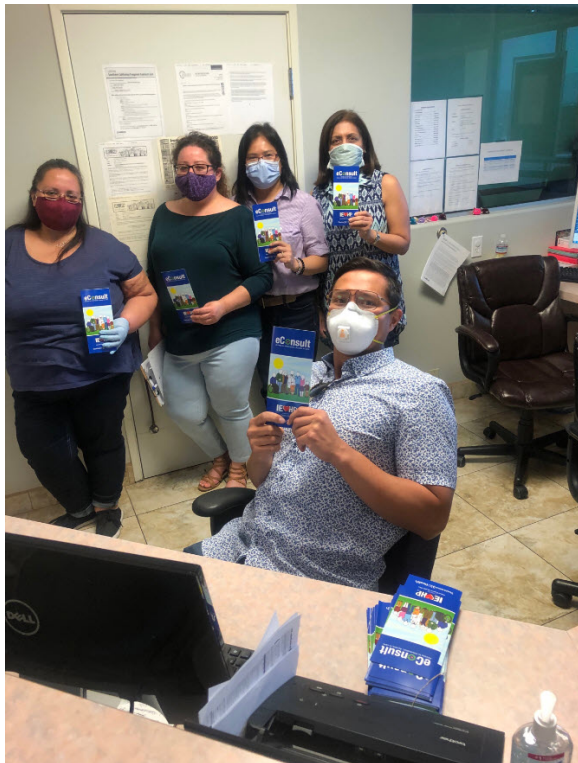
Your efforts are improving patients' access to appropriate care!

By coordinating with 80 specialists via eConsult, over 150 physicians at 61 IEHP clinic sites were able to serve **269 patients**, saving them a trip to the specialist's office while accessing specialty advice or care.



IEHP physicians received specialists' recommendations remotely and coordinated their patients' care for **half** of eConsults submitted for **infectious disease** and **endocrinology** services!

By coordinating with specialists sooner via eConsult, primary care physicians are helping reduce delays for patients to obtain clinically necessary care.



Workflow Engineer Mik Cruz and clinical staff at Melvani Ashok MD clinic training hold **eConsult patient brochures**.

Welcome Aboard!

Trainings:

- Workflow Engineer Nida Javed trained additional **specialists in otolaryngology** to answer eConsults from IEHP primary care physicians.
- A new nurse practitioner from **Vista Community Clinic** received eConsult training
- Workflow Engineer Matthew Widney trained physicians and referral care coordinators at **LivingWaters Medical Clinic, Inc.**

Go-Lives:

- **Indroj Medical Group** went live on June 17!
- The **Melvani Ashok MD** clinic went live with eConsult on June 26!

July Announcements & Events

More Clinics and Training to Come

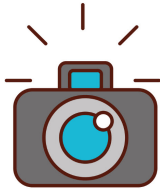
Murrieta Primary Care Clinic is kicking off the month with an eConsult go-live starting July 2.

California Medical Clinic Inc., Premium Care Clinic, and **Apple Medical Center and Urgent Care** will follow Murrieta's lead—each will progress from eConsult orientations to going live with eConsult by the end of July.

Meanwhile, physicians at **Neighborhood Healthcare (Temecula)** and **Grove Internal Medicine** will receive training in eConsult.



Need a camera?



To ensure clinics have resources and tools to capture dermatological content for eConsults, we offer **IEHP-sponsored dermatology cameras and training** to any clinics in need. *If interested, please contact our workflow engineers (contact information listed at the bottom).*

Call for Specialist Reviewers

The MCEI team is always open to bringing more specialist reviewers aboard to join our mission.

If you know specialists willing to contribute and who believe in improving access to care for patients in the safety net, please submit their names and contact information to eConsultIE@iehp.org.

Connect With Us

We are here to support you in any way we can. Our MCEI team offers continuous support and training to physicians and clinical staff, which can be done virtually or in-person.

Support Desk



Jessica Ayala

Need eConsult Support? Contact our support desk engineer!

From username and password assistance to technical aid and clarification of workflow processes, Jessica Ayala is here to help!

Submit a ticket via the eConsult platform or call the help desk at [**\(909\) 687-0244**](tel:9096870244).

She will assist you within 24 hours.

In Person & Virtual Assistance



Schedule appointments for provider and clinical staff introductory and refresher eConsult trainings with our workflow engineers:

Nida Javed | Javed-N@iehp.org | (909) 767-7616
Gerald Gagner | Gagner-G@iehp.org | (909) 767-7541
Mika'ele Cruz | Cruz-M2@iehp.org | (909) 296-2860
Matthew Widney | Widney-M@iehp.org | (909) 727-7494

Multi-County eConsult Initiative
<https://www.econsultie.com>

