

August 2020

Multi-County eConsult Initiative (MCEI) Updates

Monthly Webinar ~ Thanks for Joining!

In July, Registered Dietician Margaret Weiss, RD, CDCES, presented "Nutrition During COVID-19," for MCEI's **monthly webinar series**.

NUTRITION DURING COVID-19

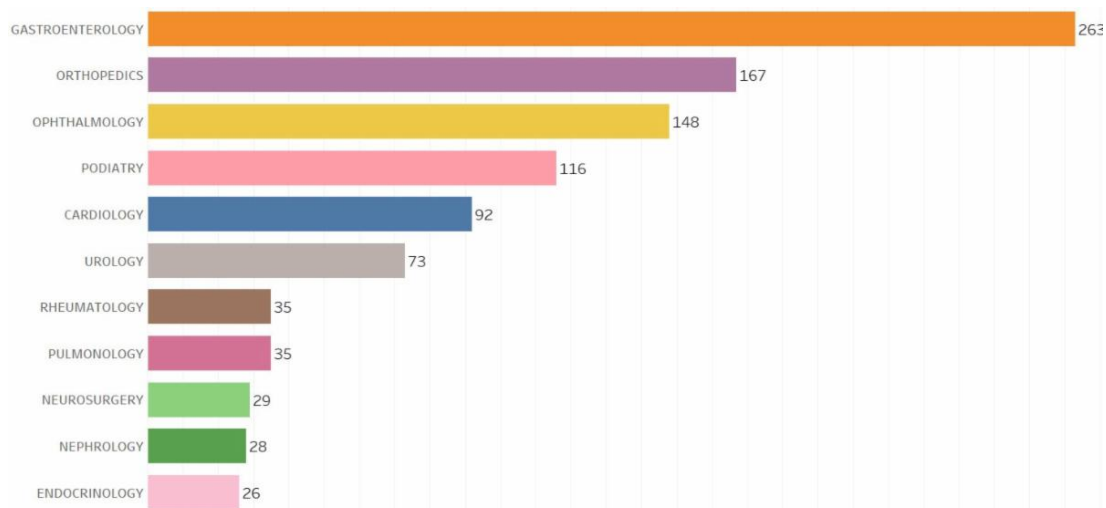


[Click here](#) to access the **slide deck**, full of helpful links & resources.

[Click here](#) to access Ms. Weiss's **recorded presentation**.

63,960 eConsults!

Top 10 Specialties for RUHS eConsults in July



Combined, RUHS, the Inland Empire Health Plan (IEHP) and the Arrowhead Regional Medical Center (ARMC) have processed **63,960 eConsults**.

RUHS primary care clinics & Riverside County Correctional Health

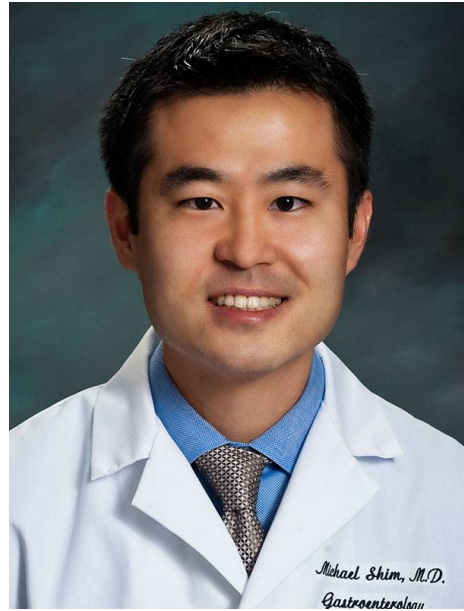
Services (RCCHS) play a major role, having submitted **1,258 eConsults** this month alone, and **20,825 eConsults** since MCEI's genesis.

Meet Your Specialist Reviewer

Dr. Michael Shim, Gastroenterology

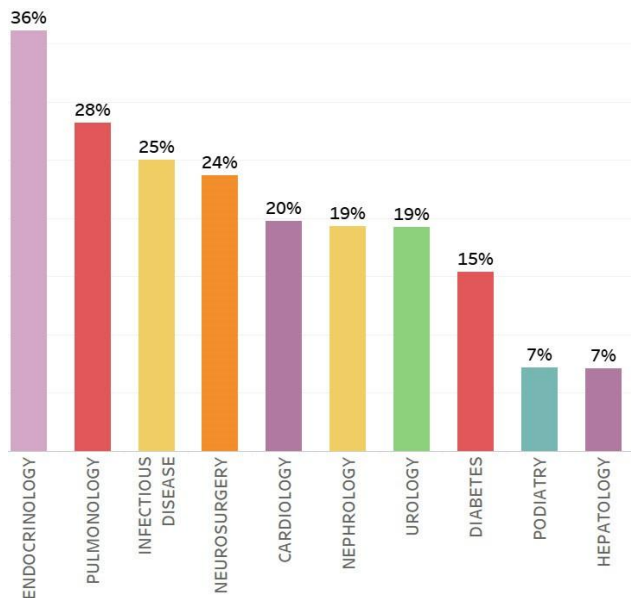
Dr. Michael Shim, MD, is a Board Certified specialist in Gastroenterology. He went to medical school at New York University (NYU), after which he completed a residency at NYU and a fellowship at UCLA.

Dr. Shim has been practicing for over 19 years. He has already reviewed **67 Gastroenterology eConsults** from RUHS primary care physicians since starting in July 2020.



Your Month in Review

Percent of RUHS eConsults resolved without the need for specialty visit in July (Top 10)



Your efforts are improving patients' access to appropriate care!

RUHS physicians received specialists' recommendations remotely and coordinated their patients' care for **over one-third** of all eConsults submitted for **endocrinology** services.

By coordinating with 37 specialists via eConsult, over 120 physicians at 20 RUHS clinic sites were able to serve **1,167 patients** by gaining access to specialty advice or care.

Welcome Aboard!

Recent Happenings:

- In early July, workflow Engineer Nida Javed spoke with **RUHS leaders at a workgroup meeting** about DTA



updates for Podiatry Fracture, as well as reminders (i.e. PCPs must sign notes for staff to submit eConsult)

Left: Workflow Engineer Matthew Widney and a clinic manager hold [eConsult patient brochures](#).

August Announcements & Events

Direct to Authorization (DTA) Updates

RUHS primary care physicians and clinical staff have been making good use of the DTA processes for **post diabetic retinal exam** and **orthopedic fracture**. Launched in July, the DTA option for **podiatry fracture** is still brand new!

Call for Monthly Webinar Speakers



We are always looking for speakers to present an engaging, didactic, and timely topic to other primary care providers in the MCEI. If you are interested in learning more about a speaking opportunity, please reach out to Nida Javed at Javed-N@iehpc.org

Connect With Us

We are here to support you in any way we can. Our MCEI team offers continuous support and training to physicians and clinical staff, which can be done virtually or in-person.

Support Desk

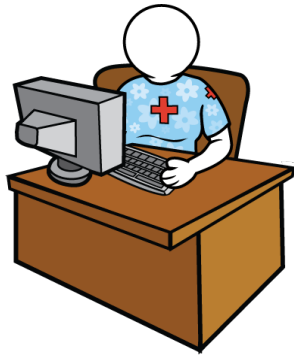


From username and password assistance to technical aid and clarification of workflow processes, Jessica Ayala is here to help!

Submit a ticket via the eConsult platform or call the help desk at [\(909\) 687-0244](tel:9096870244).

She will assist you within 24 hours.

In Person or Virtual Assistance



Schedule appointments for provider and clinical staff introductory and refresher eConsult trainings with our workflow engineers:

Nida Javed | Javed-N@iehp.org | (909) 767-7616
Mika'ele Cruz | Cruz-M2@iehp.org | (909) 296-2860
Matthew Widney | Widney-M@iehp.org | (909) 727-7494

Multi-County eConsult Initiative
<https://www.econsultie.com>

