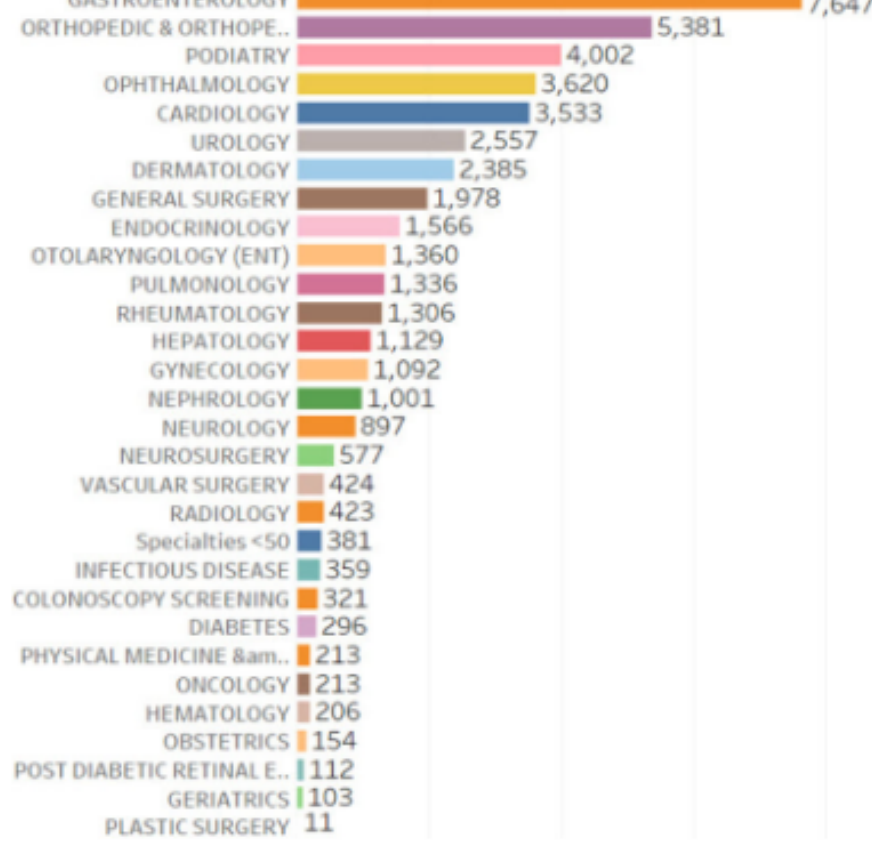


February 2020

You'll learn about your progress in the MCEI, recognize your colleagues' contributions, and discover what's in store for next month.

Over 42,644 eConsults!

eConsults Processed by Specialty



Your Contribution

Specialist reviewers have processed **over 42,600 eConsults** from the MCEI's genesis and **4,099 eConsults** just this month alone.

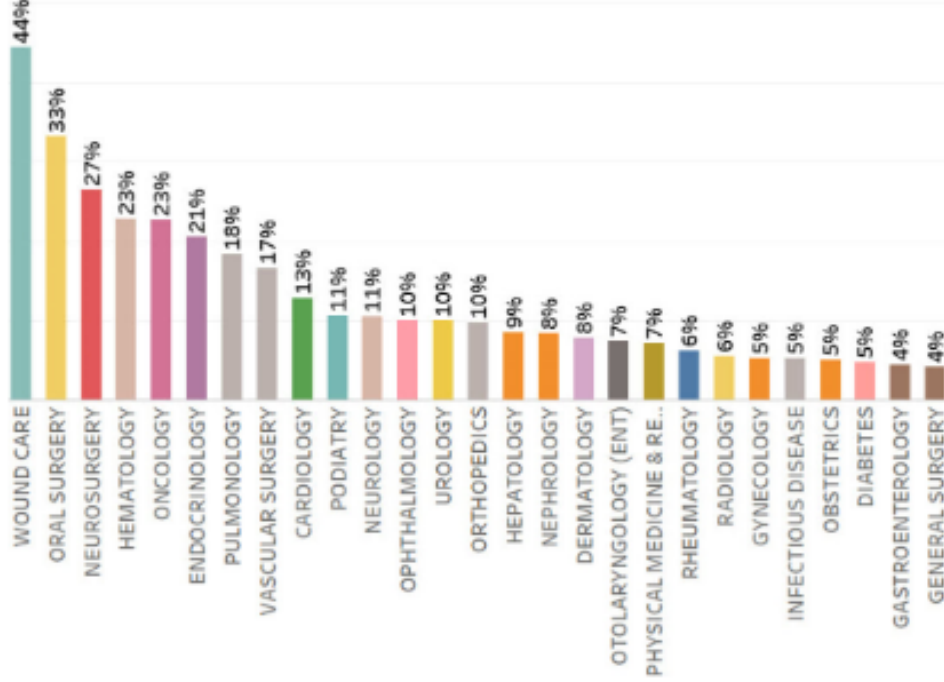
As it stands, 90 specialist reviewers across 38 specialties are reviewing incoming eConsults from over 500 providers—all with an average response time of **under 1.5 days!**

Your Month In Review

Bettering Care

The bar graph shows the percent of eConsults resolved without sending patients to a specialist this month.

By coordinating with hundreds of primary care providers, you and 89 other specialists succeeded in resolving **306** cases without the need for an in-person visit.



Your efforts are improving patients' access to appropriate care!

What was the non face-to-face rate for your specialty this past month?

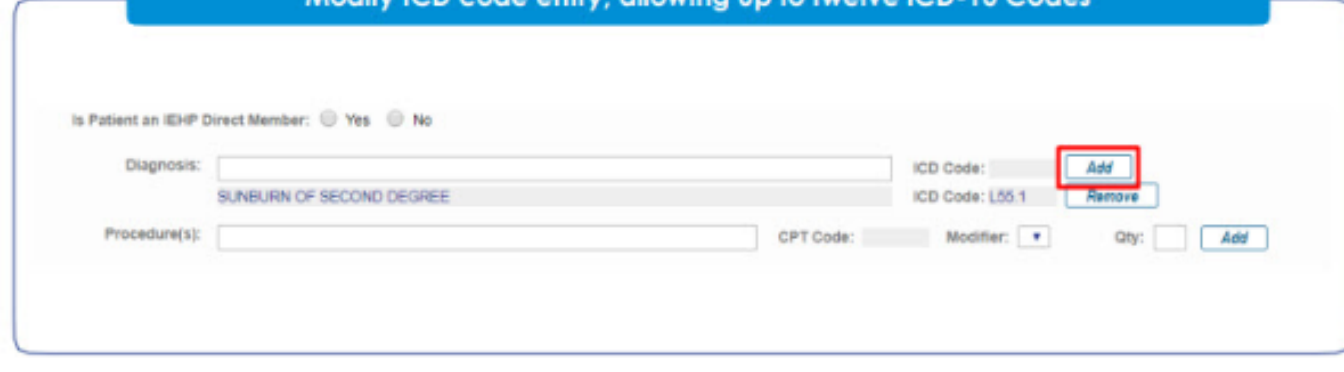
Over one-third of all cases for wound care and oral surgery services were resolved by entirely virtual means. By coordinating with primary care providers via eConsult, you are helping reduce delays for patients who do need to obtain clinically necessary care.

Platform Changes

New changes to the eConsult platform went live February 6th.

MCEI workflow engineers are here to answer your questions and walk you through the platform's newfound features. Scroll down for their contact information.

You may review the **New Features Quick Guide** by clicking on "User Guides and Info" section located to the left side of the Inbox page.



Above: One of the ten platform updates outlined in [Quick Guide](#)

Connect With Us

The More the Merrier

The MCEI is always open to bringing more specialists aboard to join our mission.

Who better to provide recommendations for the MCEI specialists than those already involved?

If you know specialists willing to contribute and who believe in improving access to care for patients in the safety net, please submit their names and contact information to eConsultIE@iehp.org.



Here For You



Feel confident navigating the platform with the MCEI team which offers continuous support and refresher training to providers and clinical staff. To master new platform changes or simply brush up, schedule an appointment with our workflow engineers:

- Nida Javed | Javed-N@iehp.org | (909) 767-7616
- Gerald Gagner | Gagner-G@iehp.org | (909) 767-7541
- Mika'ele Cruz | Cruz-M2@iehp.org | (909) 296-2860
- Matthew Widney | Widney-M@iehp.org | (909) 727-7494

Shout Outs



Dr. Carla Herriford, Dermatology



Dr. Carol Murakami, Gastroenterology



Dr. Bret Powers, Orthopedics

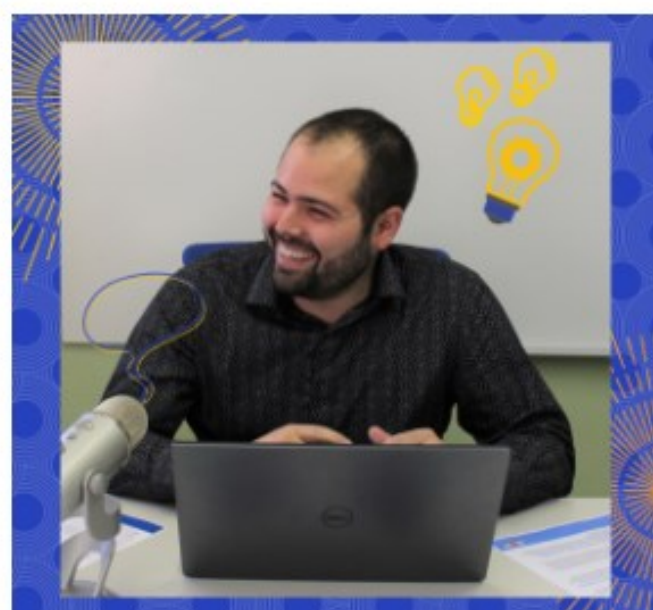
Each month we recognize a few of the many dedicated specialist reviewers for their contributions. We would like to acknowledge the prompt responses, quality dialogs, and coverage of your colleagues.

Upcoming Workgroup Calls

During our 30 minute workgroup calls, you can tackle questions and provide feedback about eConsult with MCEI's dedicated workflow engineers.



Workflow Engineer Nida Javed



Workflow Engineer Gerald Gagner

Specialty

Click Date to Add to Calendar!

Rheumatology-----	March 9th at 3:00 pm
Rehab Medicine-----	March 9th at 5:00 pm
Cardiology-----	March 10th at 5:00 pm
Gastroenterology/Hepatology-----	March 11th at 8:30 am
Endocrinology/Diabetes-----	March 16th at 7:30 am
Obstetrics/Gynecology-----	March 16th at 5:00 pm
Podiatry-----	March 19th at 7:30 am
Urology-----	March 19th at 1:00 pm
Infectious Disease-----	March 19th at 2:30 pm
Nephrology-----	March 20th at 7:30 am
Orthopedics-----	March 20th at 5:00 pm
Pulmonology-----	March 23rd at 3:00 pm
Neurosurgery-----	March 25th at 5:00 pm
Surgery-----	March 26th at 7:30 am
Hematology/Oncology-----	March 27th at 3:30 pm
Dermatology-----	March 30th at 5:00 pm

Look out for email reminders and join the next call for your specialty!